

Rotary Natural Birch

To assist you with your preliminary color selection(s), various stain finish colors on typical veneer samples are shown below. When making your selection(s), bear in mind that veneers will vary in color and texture. As a result, the final finish color may vary from what is represented in these photographs. After species and color(s) have been selected, contact the factory for actual wood samples. **This page is not intended to be used for final color selection.**



RA-1050



RA-4370



RA-100



RA-4751



RA-4368



RA-1053



RA-1051



RA-4367



RA-4366



RA-1055



RA-1054



RA-1052

Plain Sliced White Birch

To assist you with your preliminary color selection(s), various stain finish colors on typical veneer samples are shown below. When making your selection(s), bear in mind that veneers will vary in color and texture. As a result, the final finish color may vary from what is represented in these photographs. After species and color(s) have been selected, contact the factory for actual wood samples. **This page is not intended to be used for final color selection.**



RA-1050



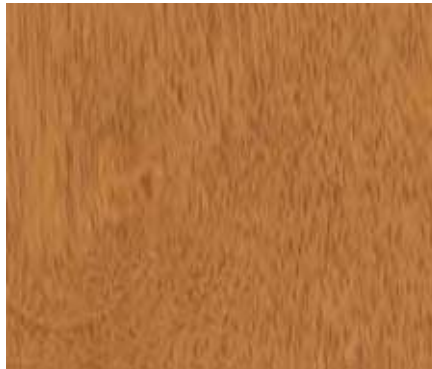
RA-4370



RA-100



RA-4751



RA-4368



RA-1053



RA-1051



RA-4367



RA-4366



RA-1055



RA-1054



RA-1052

Plain Sliced Red Oak

To assist you with your preliminary color selection(s), various stain finish colors on typical veneer samples are shown below. When making your selection(s), bear in mind that veneers will vary in color and texture. As a result, the final finish color may vary from what is represented in these photographs. After species and color(s) have been selected, contact the factory for actual wood samples. **This page is not intended to be used for final color selection.**



RA-1050



RA-4370



RA-100



RA-4751



RA-4368



RA-1053



RA-1051



RA-4367



RA-4366



RA-1055



RA-1054



RA-1052

Plain Sliced White Oak

To assist you with your preliminary color selection(s), various stain finish colors on typical veneer samples are shown below. When making your selection(s), bear in mind that veneers will vary in color and texture. As a result, the final finish color may vary from what is represented in these photographs. After species and color(s) have been selected, contact the factory for actual wood samples. **This page is not intended to be used for final color selection.**



RA-1050



RA-4370



RA-100



RA-4751



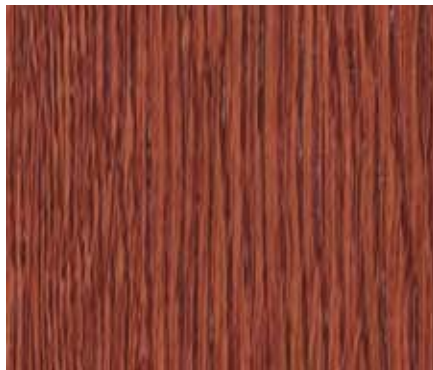
RA-4368



RA-1053



RA-1051



RA-4367



RA-4366



RA-1055



RA-1054



RA-1052

Plain Sliced White Maple

To assist you with your preliminary color selection(s), various stain finish colors on typical veneer samples are shown below. When making your selection(s), bear in mind that veneers will vary in color and texture. As a result, the final finish color may vary from what is represented in these photographs. After species and color(s) have been selected, contact the factory for actual wood samples. **This page is not intended to be used for final color selection.**



RA-1050



RA-4370



RA-100



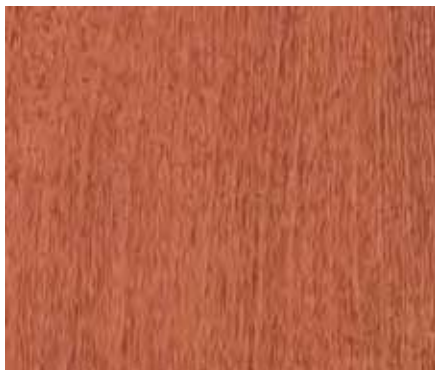
RA-4751



RA-4368



RA-1053



RA-1051



RA-4367



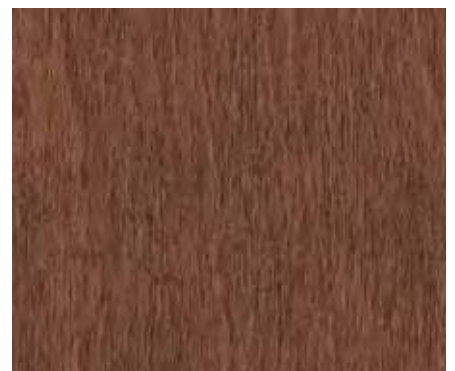
RA-4366



RA-1055



RA-1054



RA-1052

Plain Sliced Mahogany

To assist you with your preliminary color selection(s), various stain finish colors on typical veneer samples are shown below. When making your selection(s), bear in mind that veneers will vary in color and texture. As a result, the final finish color may vary from what is represented in these photographs. After species and color(s) have been selected, contact the factory for actual wood samples. **This page is not intended to be used for final color selection.**



RA-1050



RA-4370



RA-100



RA-4751



RA-4368



RA-1053



RA-1051



RA-4367



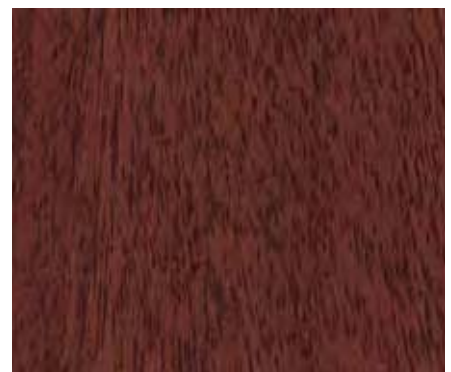
RA-4366



RA-1055



RA-1054



RA-1052

Plain Sliced Cherry

To assist you with your preliminary color selection(s), various stain finish colors on typical veneer samples are shown below. When making your selection(s), bear in mind that veneers will vary in color and texture. As a result, the final finish color may vary from what is represented in these photographs. After species and color(s) have been selected, contact the factory for actual wood samples. **This page is not intended to be used for final color selection.**



RA-1050



RA-4370



RA-100



RA-4751



RA-4368



RA-1053



RA-1051



RA-4367



RA-4366



RA-1055



RA-1054



RA-1052